

N.W. 1/4  
SECTION 36, T.7N.,R.2W., S.L.B.&M.

PREFIX: 19-041

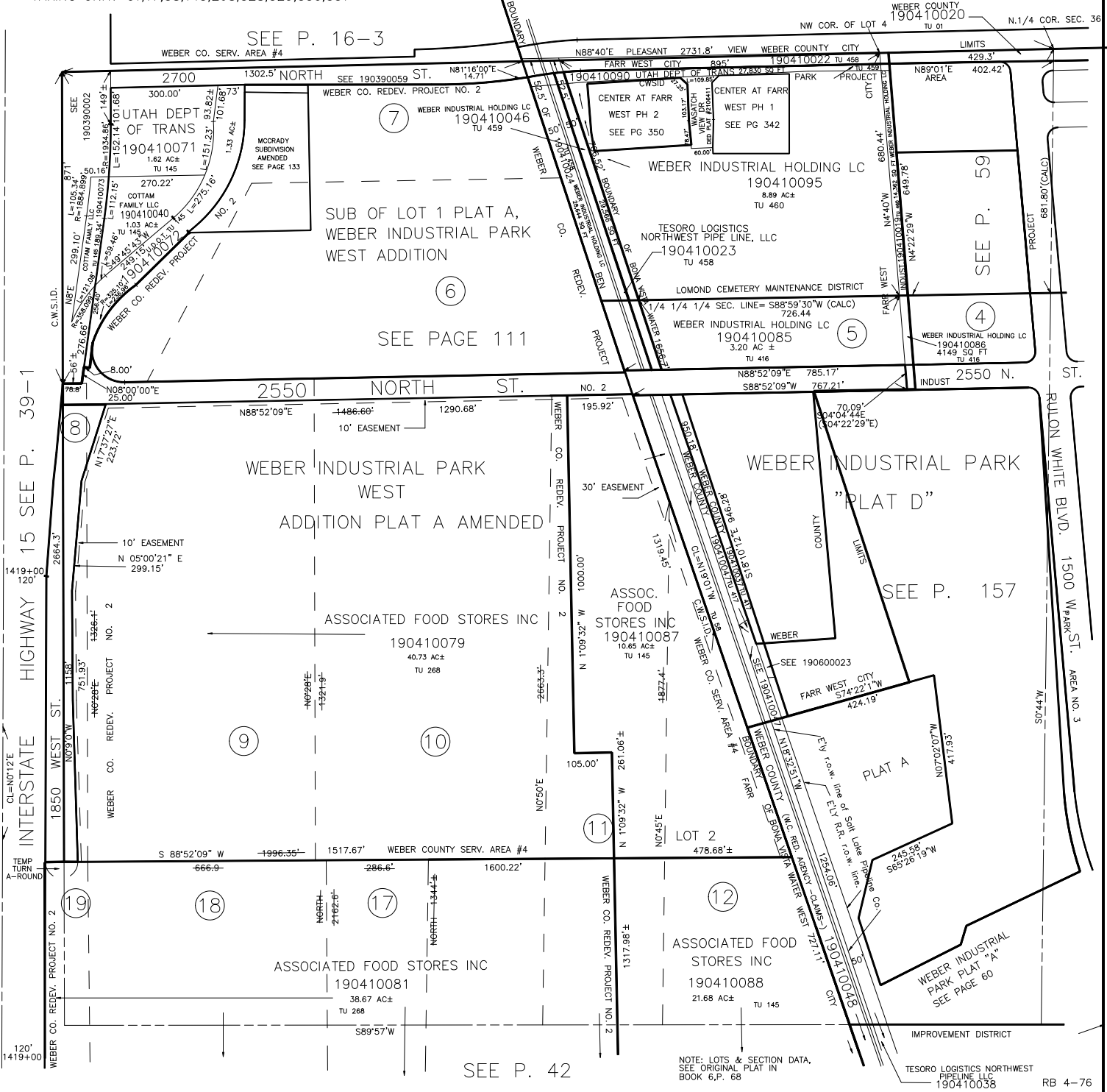
IN TOWN OF PLEASANT VIEW & FARR WEST CITY

TAXING UNIT: 01,17,58,145,268,328,329,330,331

SCALE 1" = 200'

SEE P. 16-3

WEBER COUNTY 190410020  
TU 01 N.1/4 COR. SEC. 36



SEE P. 42

TESORO LOGISTICS NORTHWEST PIPELINE LLC 190410038 RB 4-76